

INVEST IN TECHNOLOGY WITH LONG TERM VALUE.



Producer benefits

Choosing Promat DCC waterbeds means adopting a solution designed for durability and ease of use.

- Reduced bedding costs and maintenance over time due to tough, low-maintenance design.
- Compatible with modern dairy technology, including robotic milkers and advanced barn systems.
- Reliable herd health improvements lead to lower veterinary costs and increased milk production.



Cow comfort and health benefits

Promat DCC waterbeds are engineered to optimize comfort, cleanliness, and health for every cow in the barn.

- Dual-chamber design continuously floats and cushions pressure points, reducing hock and knee injuries.
- Moisture-shedding surface keeps bedding dry and clean, lowering somatic cell counts and reducing mastitis risk.
- Consistent support and comfort promote longer lying times, faster recovery from injuries, and less lameness overall.

WHAT PRODUCERS ARE SAYING:

“ You can just see it from the way they lay in the stalls, they're very comfortable on the waterbeds. A comfortable cow is a healthy cow that's going to last a long time. ”

— Owen Wright, Wrico Holsteins



DCC WATERBEDS ARE BUILT TO LAST

We stand by our beds with a 10-year warranty.

10
YEAR
WARRANTY



Learn more at:
promatinc.com



Contact us at:

✉ sales@promatinc.com
☎ +1-226-242-0286

Follow us:

Facebook: @promatinc
Instagram: @Promat_inc

promat

DCC Waterbeds®
Dual Chamber Cow Waterbeds
BY PROMAT

REST EASY

WITH DCC WATERBEDS

BY

promat

DCC Waterbeds®
Dual Chamber Cow Waterbeds
BY PROMAT

promatinc.com

WHY COMFORT MATTERS

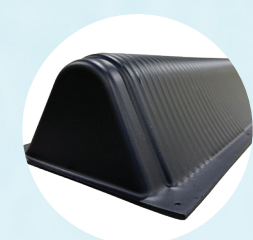
Cow health, herd performance, and productivity.

A comfortable cow is a healthier, more productive cow. DCC waterbeds help your herd get better rest — boosting milk yield and reducing health issues.

OUR DUAL CHAMBER ADVANTAGE

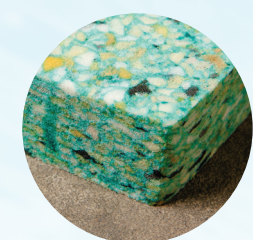
Not all waterbeds are created equal. That's why DCC waterbed systems are built with a patented dual chamber design — a smarter solution that supports cows where it matters most.

By limiting water transfer between chambers, this design also ensures stable footing and a consistent lying experience. It's engineered comfort that helps cows rest better, stay healthier, and produce more — day after day.



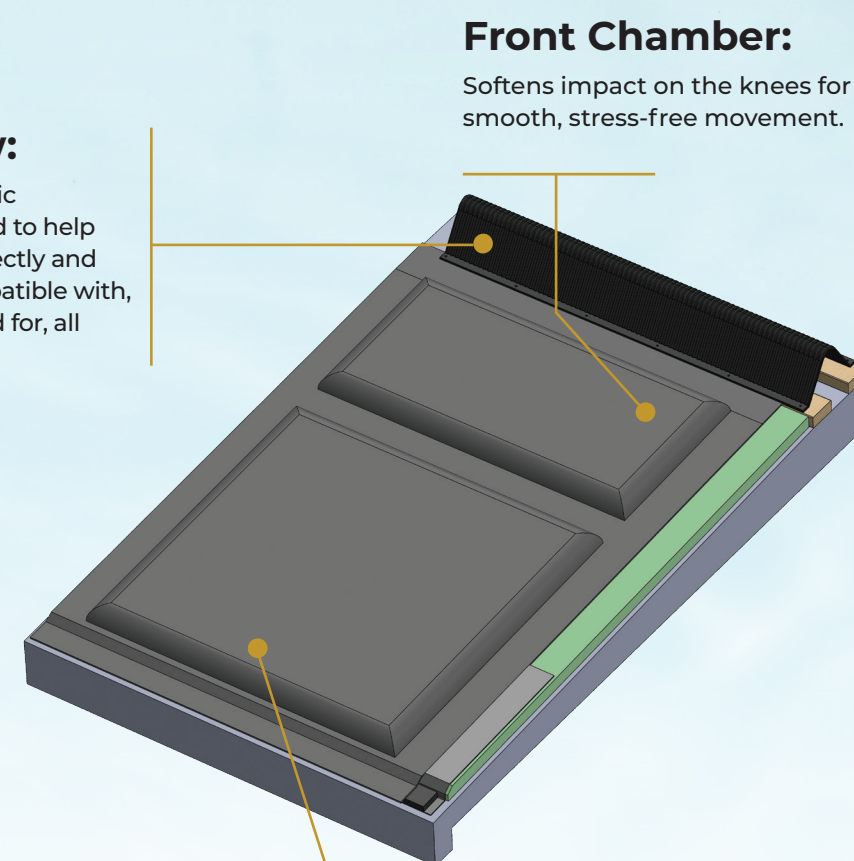
Poly Pillow:

A specialized, plastic brisket locator used to help position cows correctly and comfortably. Compatible with, and recommended for, all DCC Waterbeds.



Promat High Density Foam:

Available in a polyurethane or latex blend, enclosed in a protective plastic moisture barrier. Our signature foam retains 36mm thickness after 100,000 hoof impacts (vs. <20mm in competitors).



Front Chamber:

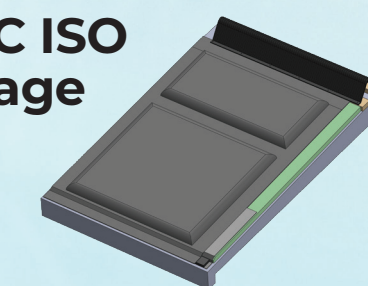
Softens impact on the knees for smooth, stress-free movement.

Rear Chamber:

Cushions the hocks and udder, reducing pressure points and promoting long-term joint health.

CHOOSE THE RIGHT WATERBED FOR YOUR HERD

The DCC ISO Advantage

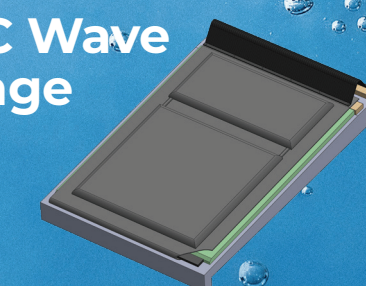


- **International Adoption:** Trusted on dairy farms around the world for more than 20 years.
- **Patented Comfort & Control:** Dual-chamber design with independently filled front and rear chambers provides targeted support, stability, and precise water control.
- **Enhanced Cow Comfort:** Optional premium foam layer encourages faster lying times and greater overall comfort.
- **Clean, Cool & Hygienic:** Engineered to drain liquids away while maintaining stalls 5-10°F cooler than alternative materials.
- **Durable & Versatile:** Long product lifespan (15-20+ years) and compatibility with all free stall systems.



See the DCC ISO in action

The DCC Wave Advantage



- **Durable Comfort Base:** High-density memory foam encased in a tough plastic moisture barrier for lasting comfort and protection.
- **Secure & Easy Setup:** Edge tuck system keeps bedding in place and prevents shifting, with a single fill point for quick installation.
- **Patented Support Design:** Dual-chamber construction delivers targeted support and stability tailored for dairy herds.
- **Clean, Cool & Hygienic:** Engineered to drain liquids away while maintaining stalls 5-10°F cooler than alternative materials or mattress options.
- **Built to Last:** Long product lifespan (15-20+ years) and compatibility with all free stall systems.



See the DCC Wave in action